



幸福艺术馆改造计划

Happy gallery improvement plan

1. 设计理念说明 / Design concept statement

幸福艺术馆改造计划

从幸福的感受中切入

探寻艺术空间中幸福的来源与产生方式

观展时的舒适感，与心仪作品间的羁绊感，创作时的喜悦感，完成作品的满足感，展出时的成就感。

亲情、爱情、友情在创作空间中的碰撞与交流

增加有趣的空间体验打破观展时的庄重感

可移动装置在空间的介入：展示作品 & 租用可移动空间进行艺术创作（适用于不同人群容量的创作空间）

什么是幸福？

对幸福的感受是一种非线性的体验，随着时间，场所和经历的不同，对幸福的认知也是不同的，与亲人相处的温情、与爱人依偎的柔情、与朋友玩耍的欢愉也有可能是独坐长椅上的宁静，酒桌碰杯的激情，艺术作品前的体会

Happy gallery improvement plan

Happy gallery improvement plan is operated from the view of exploring happiness resource in space, how is it generated, comforts at exhibition, restrictive feeling of ideal works, happiness of creation, satisfaction of finishing works and sense of achievement at exhibition. The collision and communication of Family love, love and friendship provide more interesting space experiences and break the interference of solemnity and movable devices in space. Procedures of artwork exhibition and creation in rented movable space (applicable to artwork creation of different people)

What is happiness?

The feeling of happiness is a non-linear experience that changes with time, circumstances and experiences. Besides, the cognition of happiness is different too. It could be the warmth of staying with family, sentiment of cuddling with lovers, happiness of playing with friends, quietness of sitting on a long bench alone, passion of drinking at table and experiences in front artworks.

1. 设计理念说明 / Design concept statement

什么是艺术馆?

艺术作品与艺术活动和创作的融合

什么是让你感到幸福的艺术馆?

1. 空间中情感的介入
2. 包容性的场所
3. 一些有趣的体验
4. 亲情, 爱情, 友情, 温情, ……在空间中的碰撞与交流

如何让幸福进入艺术馆?

1. 打破快餐艺术
2. 打动观者
3. 艺术源于生活
4. 艺术的生产过程应该被大众所接受, 满足源于参与艺术的过程与作品的展示与呈现
5. 氛围于艺术馆中, 空间产生的微妙变化 (观者于空间中与空间给予观者的感受)
6. 活动的发生, 人、物与事件的发生丰富了空间的同时模糊建筑的定义

What is art gallery?

It is an integration of artwork and artistic events.

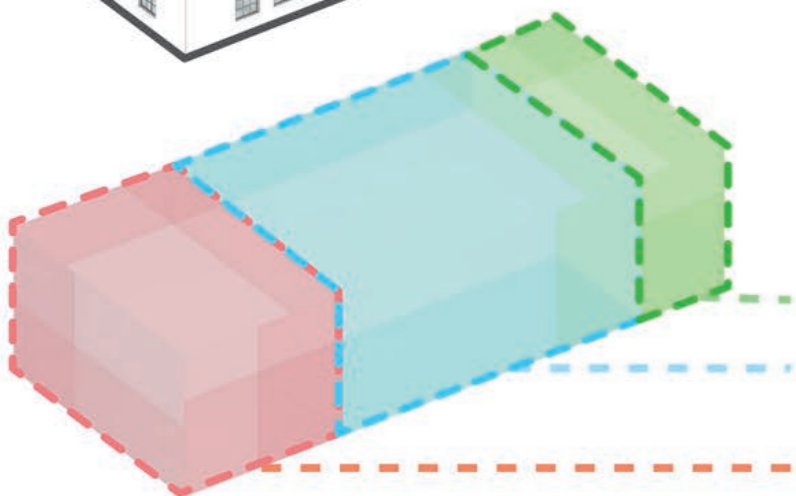
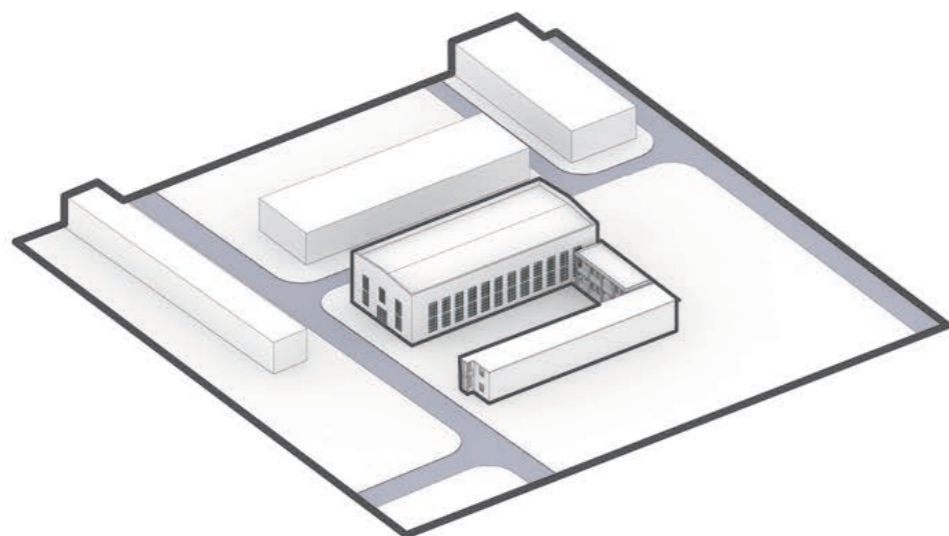
What is an art gallery that makes you feel happy?

1. Emotional intervention in space
2. Tolerant circumstances
3. Some interesting experiences
4. Family love, love, friendship and warmth

How do we make happiness go into gallery in the collision and communication of space?

1. Break fast food kind of art
2. Move viewers
3. Art inspired from life
4. Creation of artworks should be accepted by the public and be applied to engage in exhibitions.
5. The atmosphere in art gallery causes slight changes in space (viewers in space and feelings the space brings to viewers).
6. Occurrences of activity: occurrences of human, objects and incidences not only enrich space but also vague the definition of architecture.

2. 分析图 / Analysis diagram



原有厂房建筑遗址位于厂区的西北角，与周边建筑呈环抱趋势，在这一现有条件下，如何打破原有的工业建筑先天的严肃感产生幸福感成了建筑设计的重点

The architecture site of original factory lies in the northwest corner of the plant area and takes on a surrounded trend with neighboring buildings. Under the existing conditions, how to break the inborn seriousness of previous industrial architectures and create sense of happiness has been the key point in architecture design.

对原有厂房进行先期的区位划分

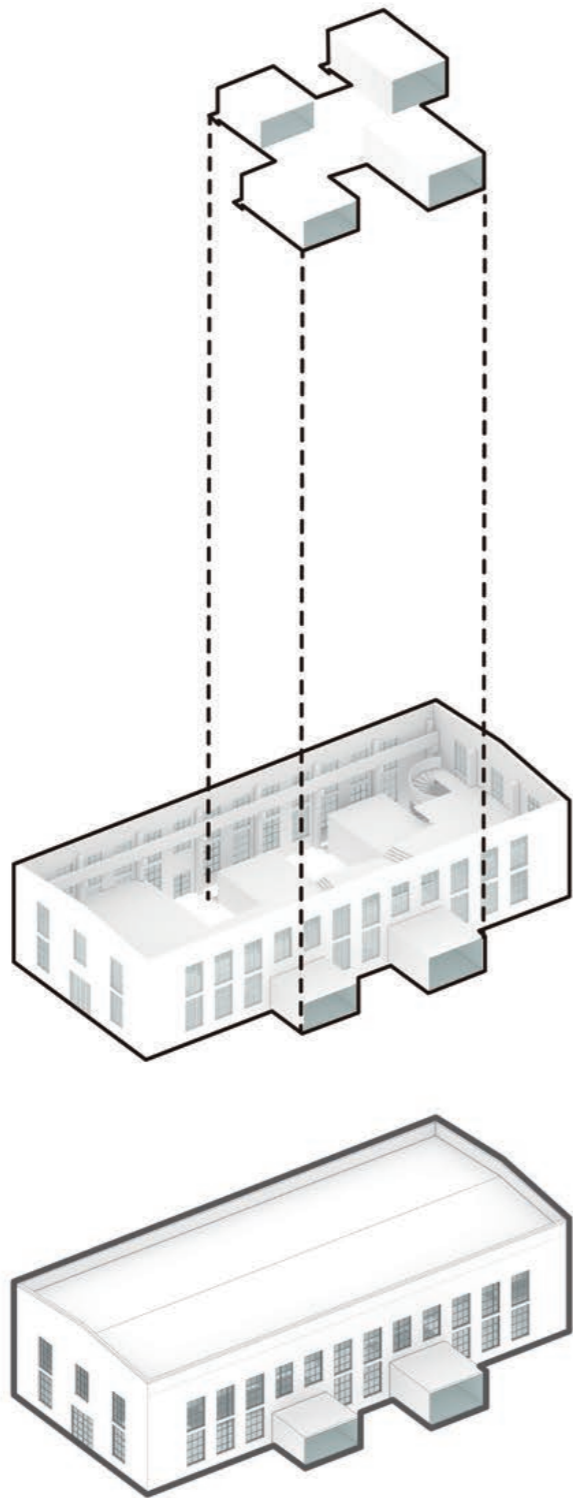
Make initial location division on previous factory

会议与工作空间 / Conference and working space

展览空间 / Exhibition space

休息与用餐空间 / Breathing and dining space

2. 分析图 / Analysis diagram



可移动装置在空间的介入：展示作品 & 租用可移动空间进行艺术创作（适用于不同人群容量的创作空间）

The intervention of mobile installations to the space: work exhibition & artistic creation in rented mobile space (applied to creative space of various crowd accommodation)

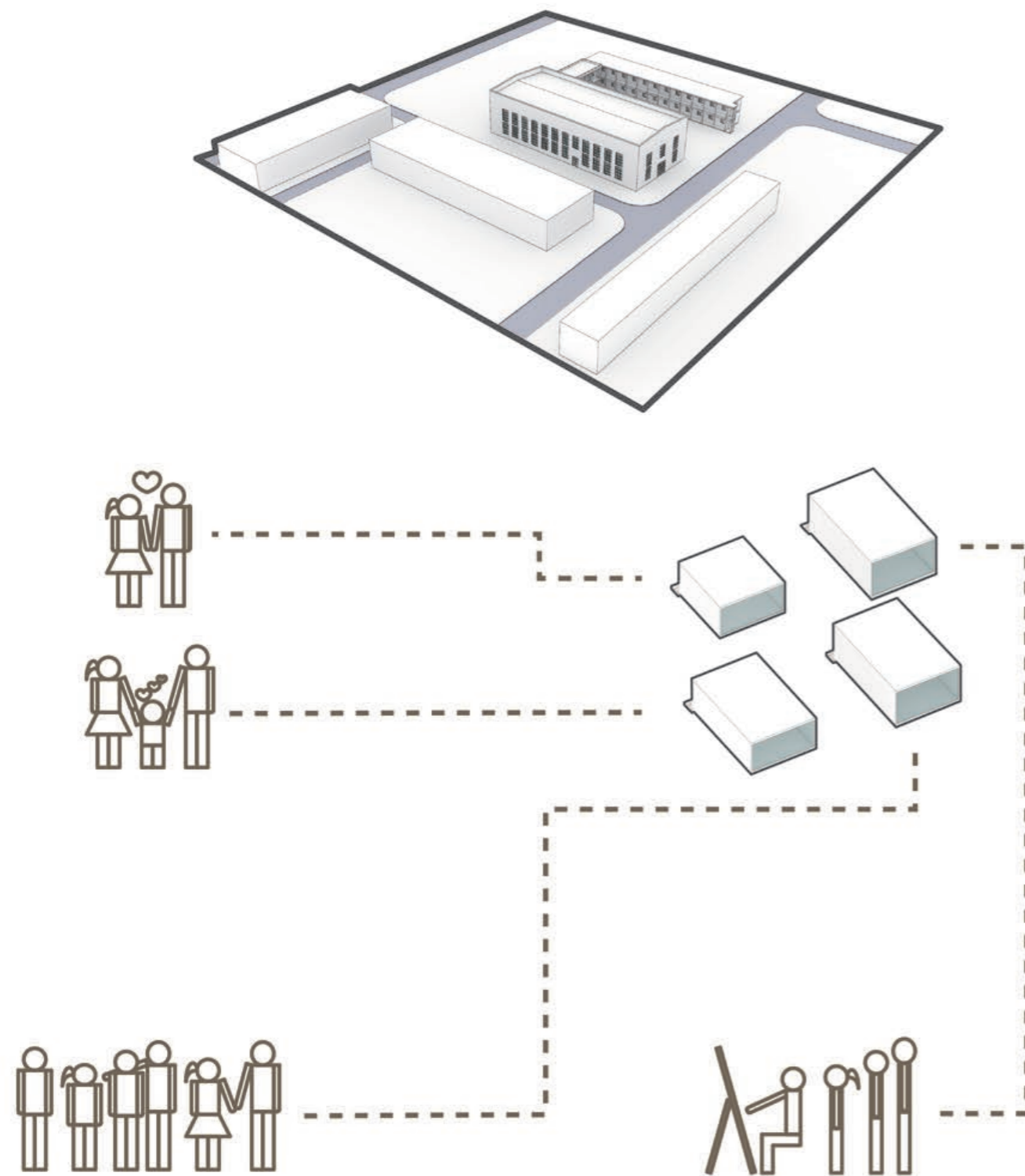
打破建筑原有工业遗址所天生带有的严肃感

Breaking the inborn seriousness of previous industrial sites

生成新的建筑

And construct new buildings

2. 分析图 / Analysis diagram



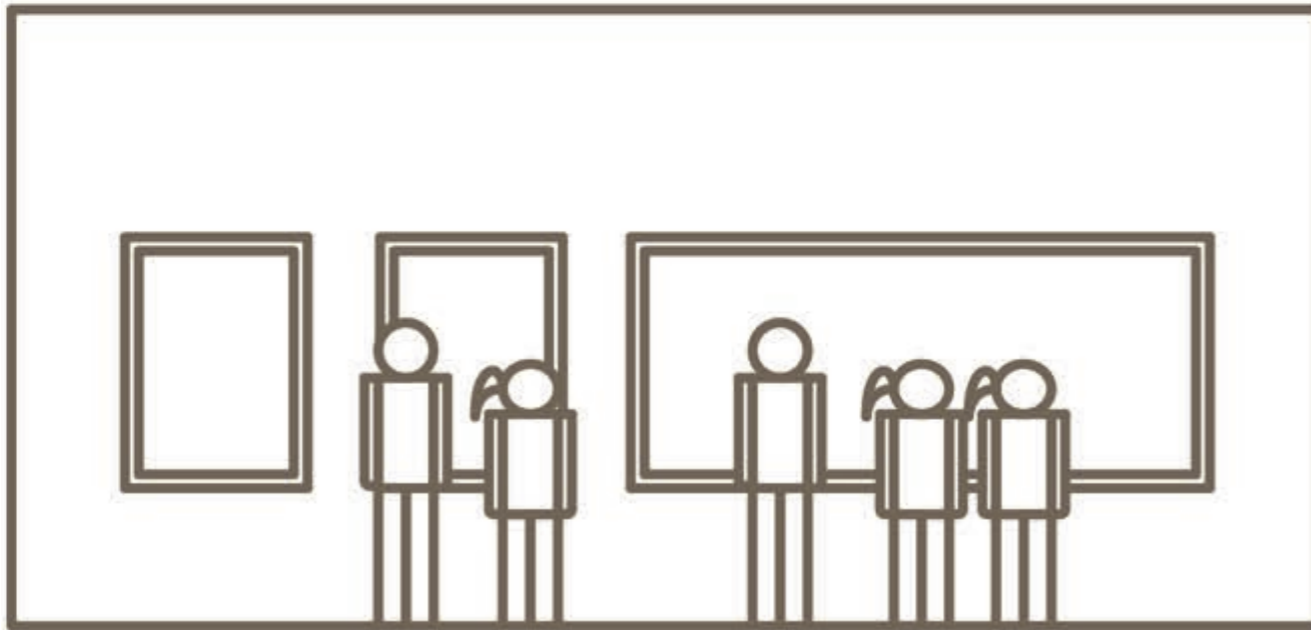
1. 预定及租用可移动空间用于家庭及亲友进行艺术创作

1. Reserve and rent movable space for artwork creation on family and friends.

2. 现场会有艺术家 & 画家进行现场创作与改评等

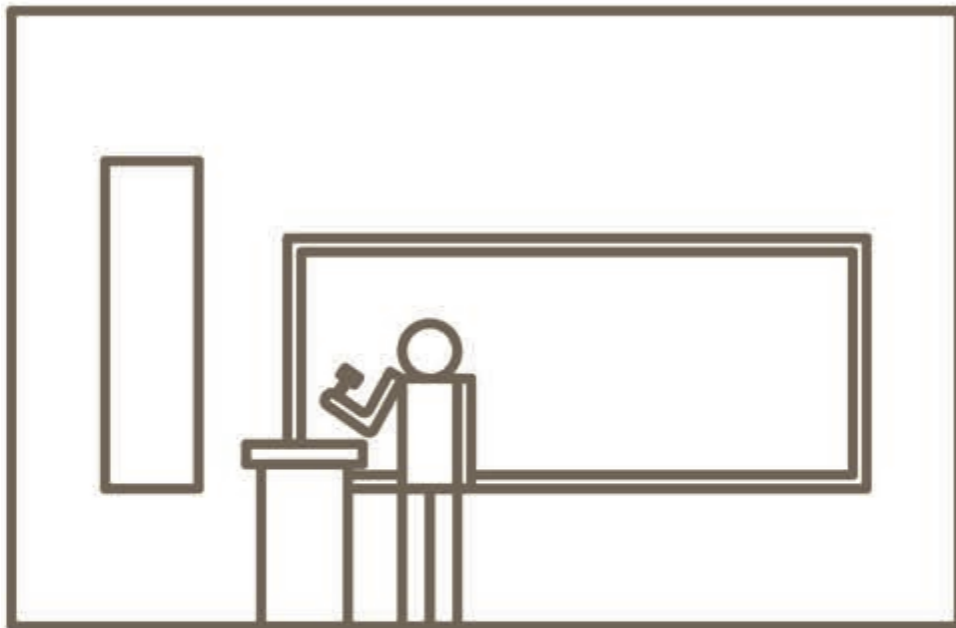
2. There will be artists and painters to proceed with on-site creation and reviews.

2. 分析图 / Analysis diagram



3. 完成作品后作业可留于艺术馆进行为期一周的展览

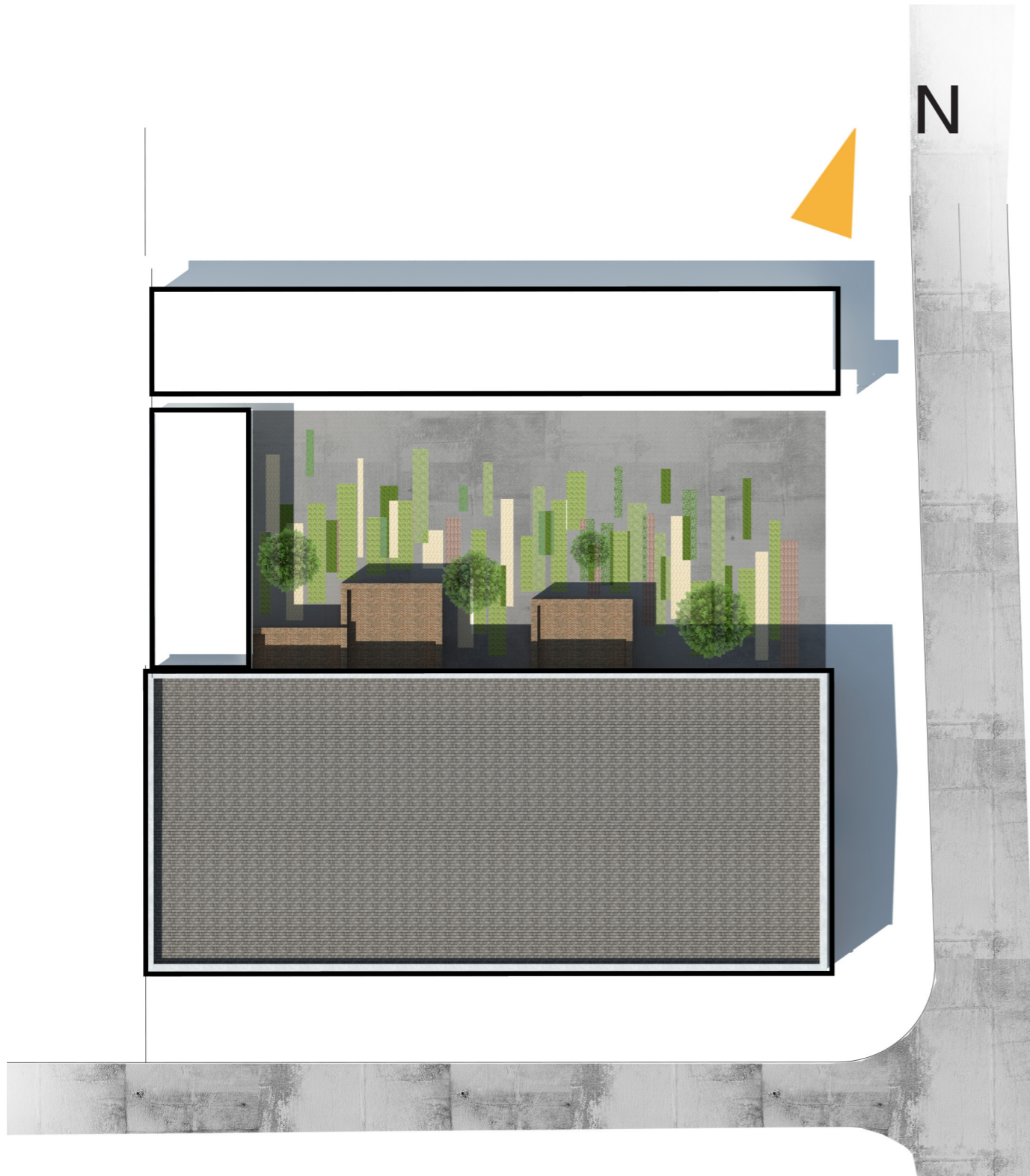
3. Finished artworks will be exhibited in art gallery for a week.



4. 优秀的作业亦会被艺术馆购入收藏 & 拍卖

4. Excellent artworks will be bought by art gallery for collections and auction.

3. 总平面 / Mater plan



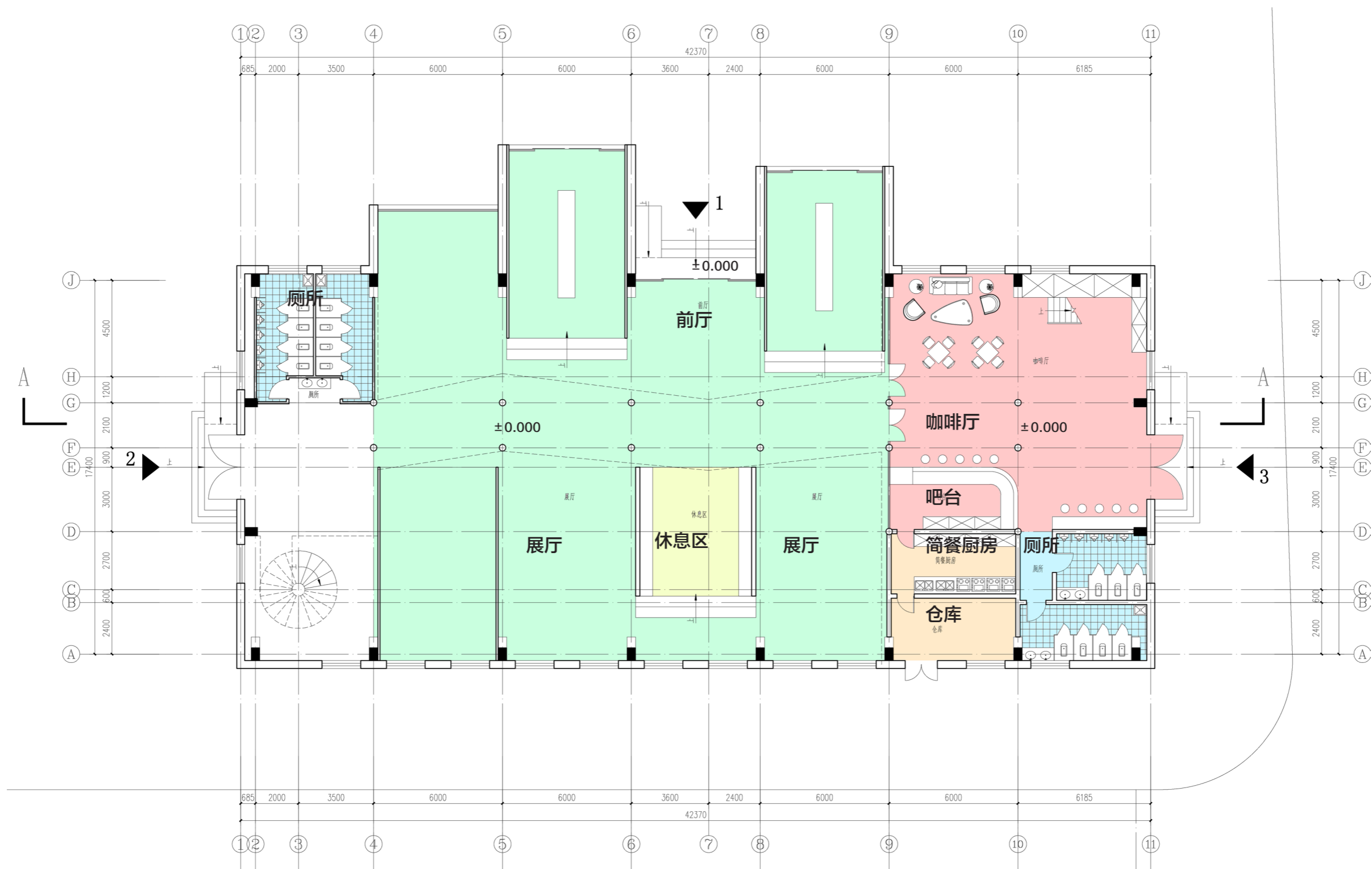
建筑一层面积: 834 m²

建筑二层面积: 328 m²

建筑总使用面积: 1162 m²

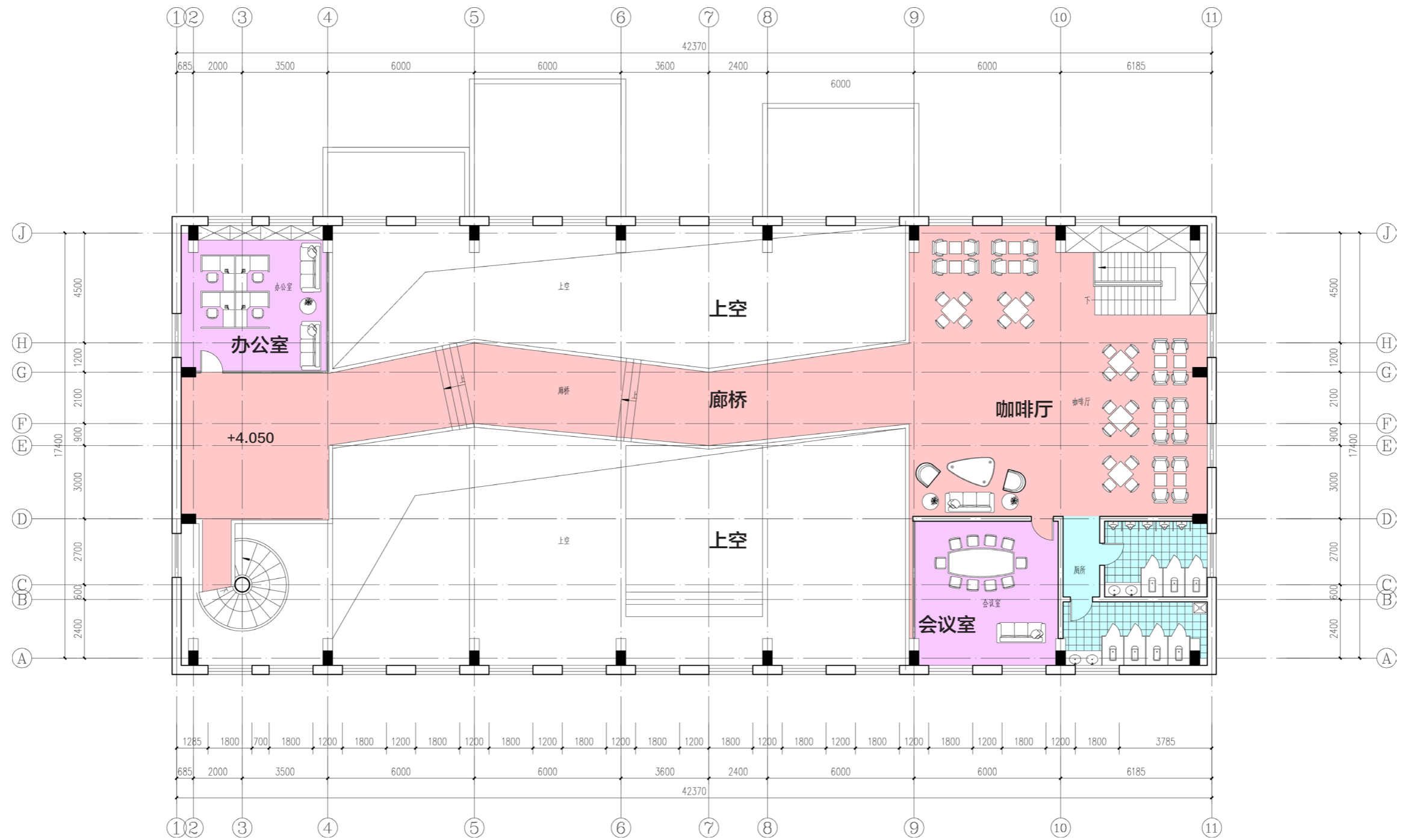
建筑绿化面积: 100 m²

4. 平面图 / Plane graph



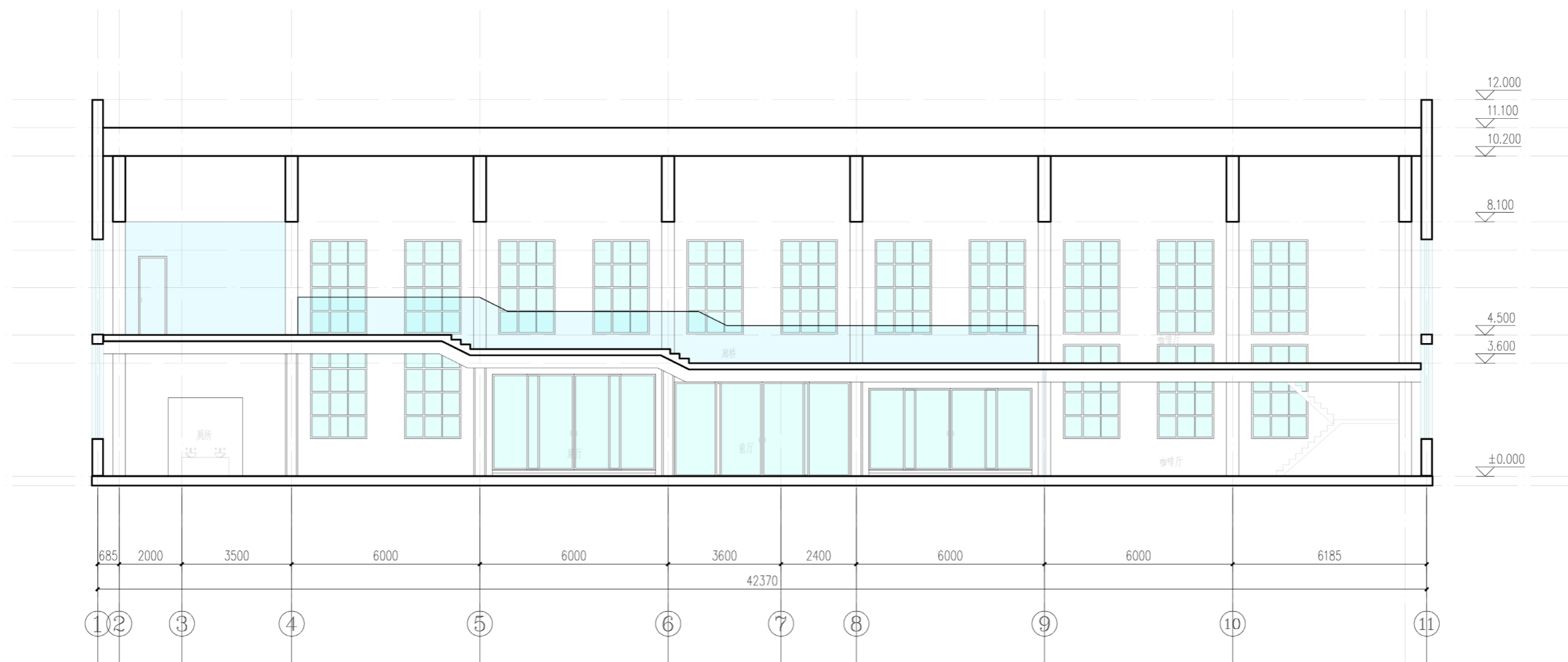
一层平面

4. 平面图 / Plane graph



二层平面

5. 剖面图 / Profile map



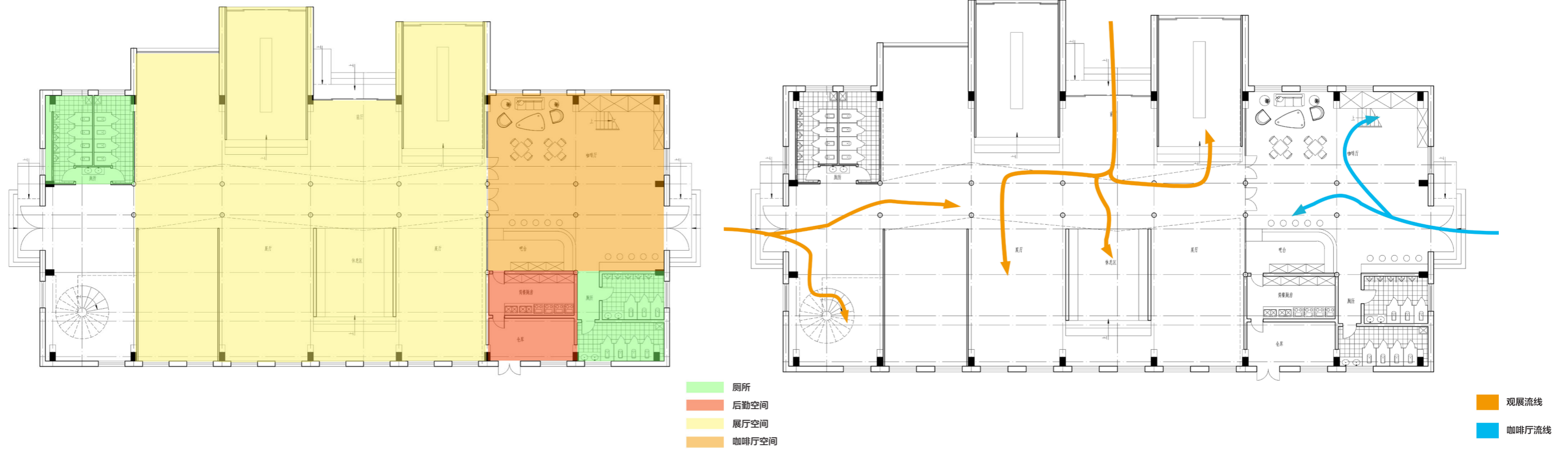
A-A 剖面图

6. 立面图 / Elevation



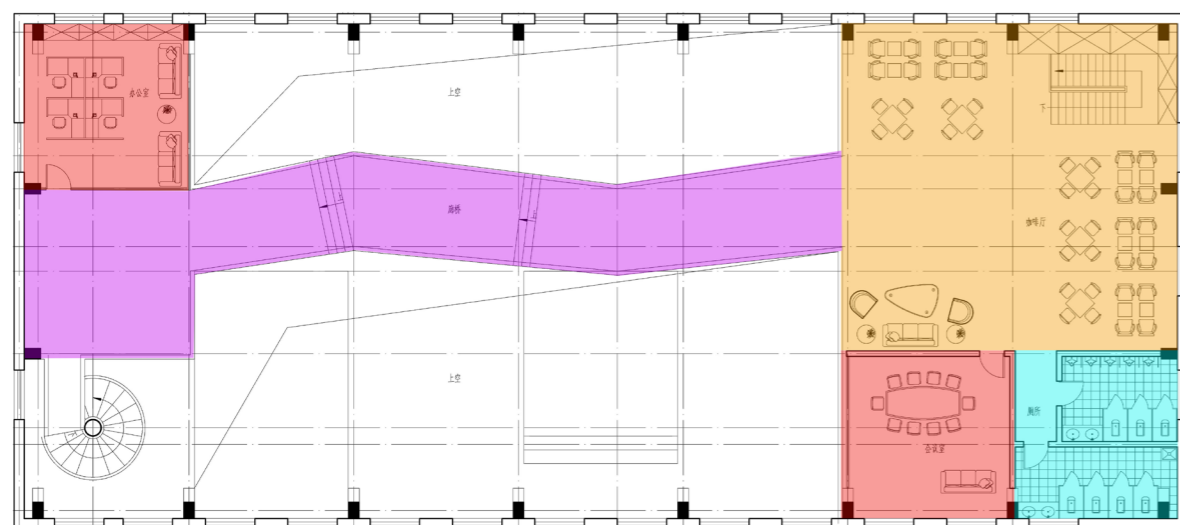
北立面图

7. 功能流线分析 / Streamline analysis on function

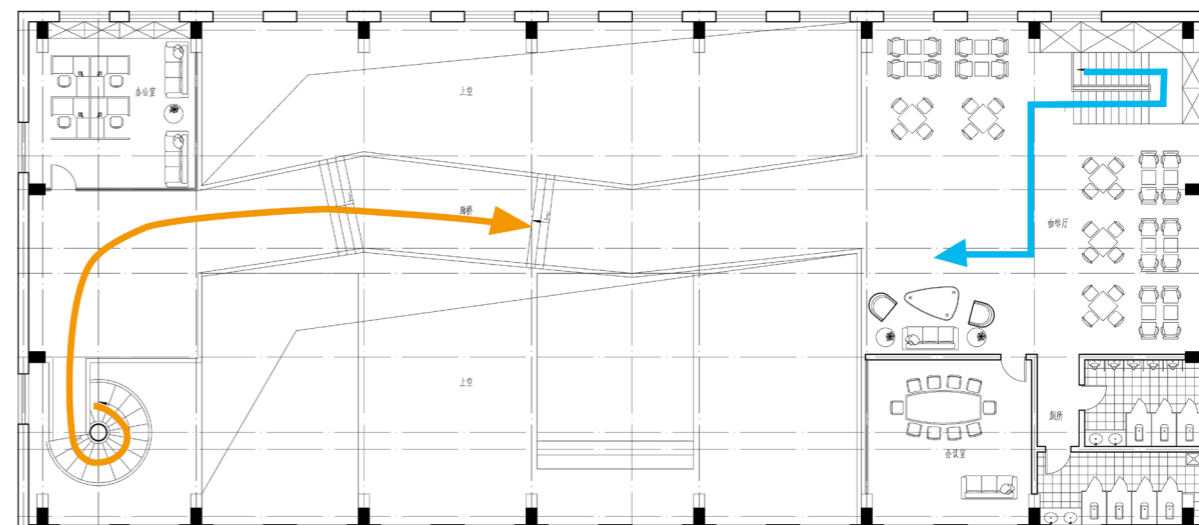


一层功能流线分析

7. 功能流线分析 / Streamline analysis on function

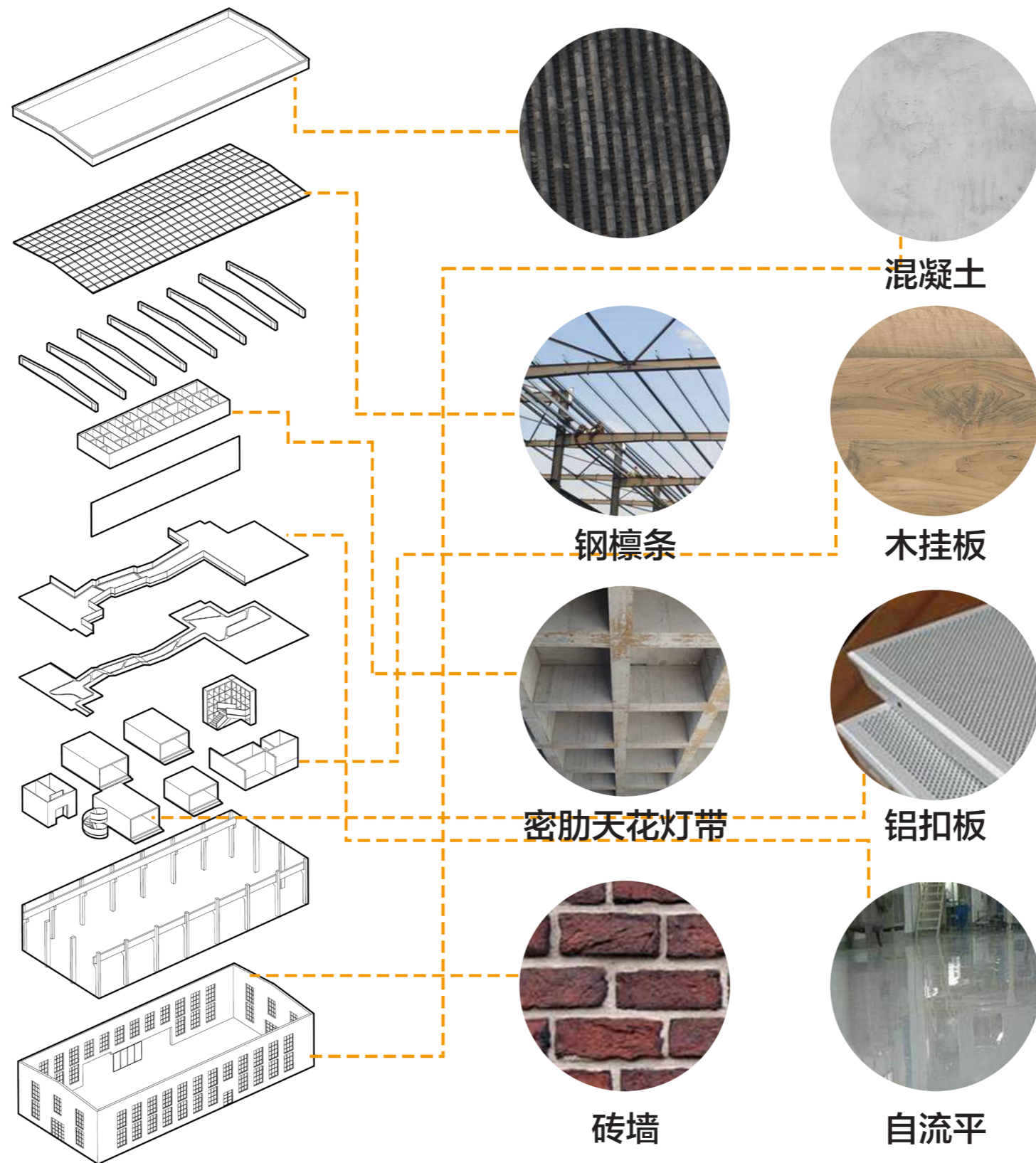


- 廊桥空间
- 厕所
- 后勤办公空间
- 咖啡厅空间

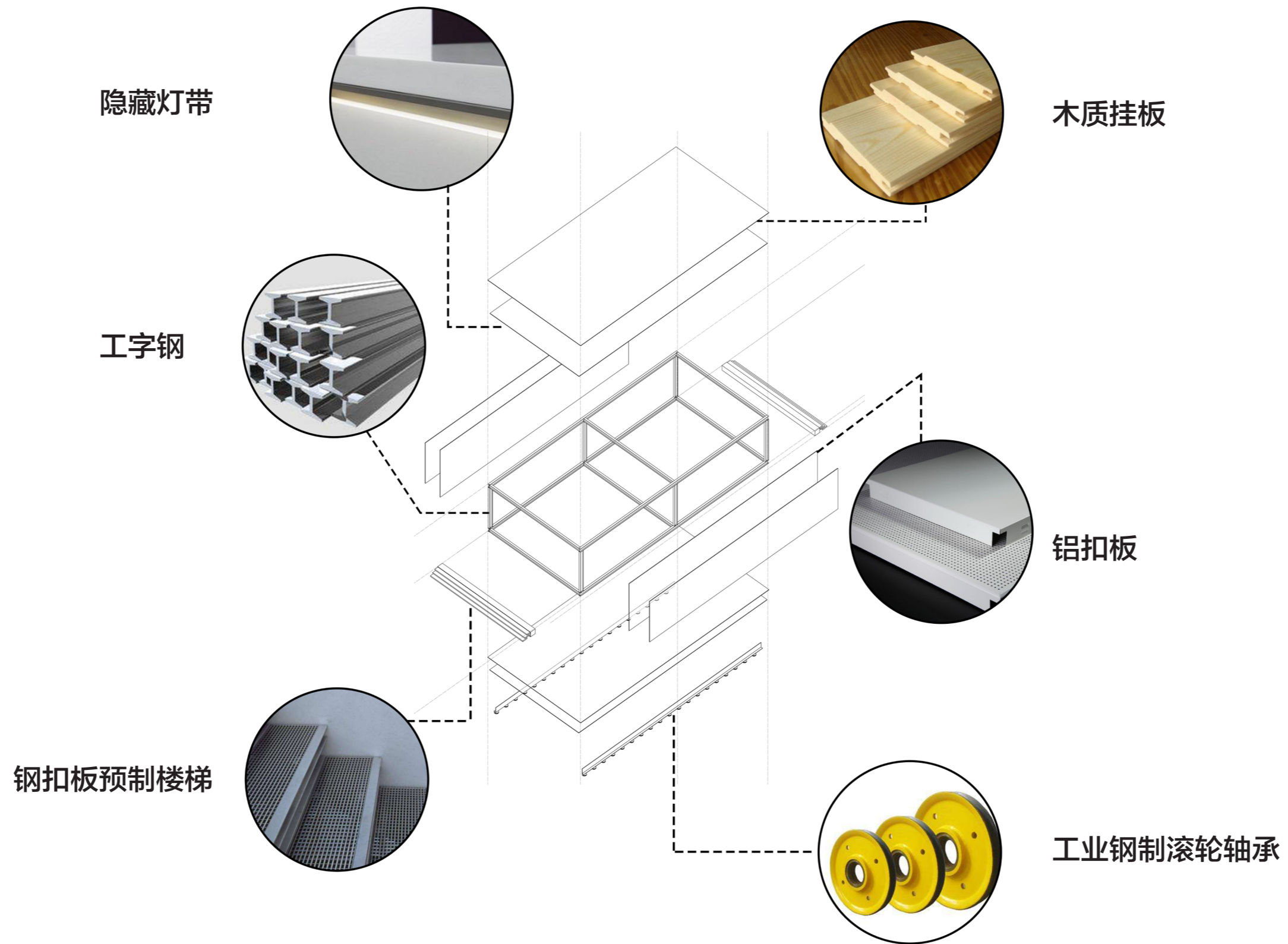


- 观展流线
- 咖啡厅流线

8. 建筑结构与材料分析 / Architectural structure and material analysis



9. 装配式结构及材料分析 / Fabricated structure and material analysis



10. 效果图 / Design sketch



外部效果图

10. 效果图 / Design sketch



10. 效果图 / Design sketch



10. 效果图 / Design sketch

