

《楚辞》最早提到昆仑山有悬圃，仙境也。清代纪昀在《阅微草堂笔记》中记：「悬圃，珠树芝田……」可见，悬圃作为中国传统园林的起源之一，是幸福之园。



匣中悬圃

匣中悬圃福艺术馆设计

Happy Art Museum
Hanging Fairyland Garden in A
Casket

发现问题

Problems Found

不幸福

- 城市远离自然
- 日日呼吸雾霾
- 工作节奏快速
- 交流全靠虚拟



幸福是什么?

幸福

- 认识回归自然
- 寻找清新空气
- 做慢慢的蜗牛
- 绿色艺术交流

分析问题：宏观

基地分析

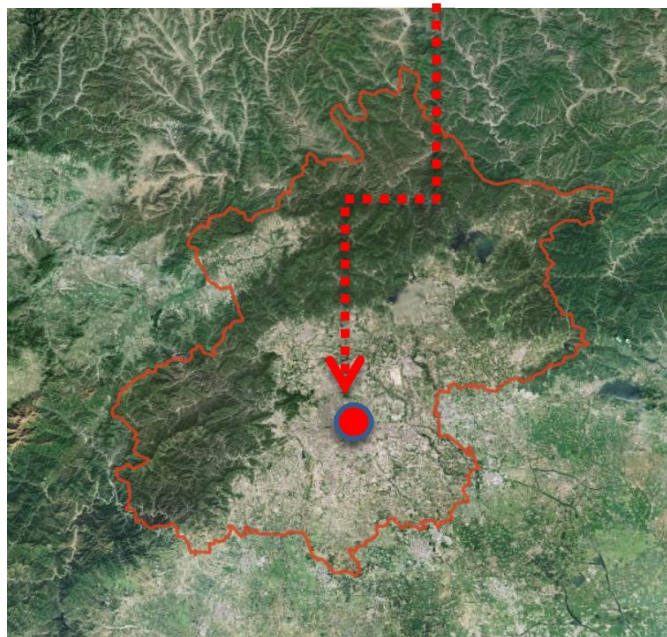


■ 超级城市北京：“人工沙漠化”

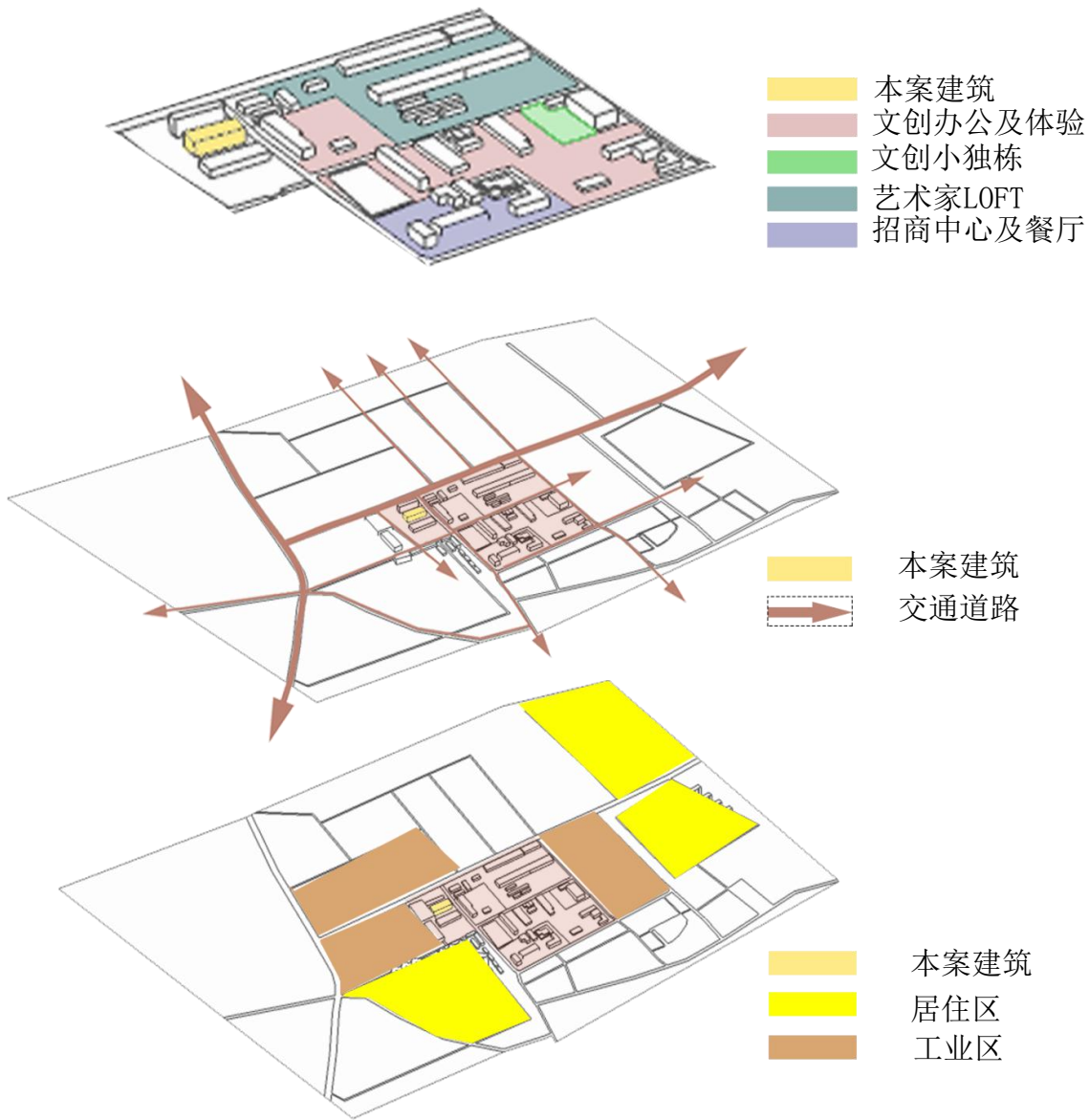


■ 改造厂房置入城市：“城市中的绿洲”

朝阳区豆各庄乡
北京东方石油化工有限公司助剂二厂3号楼



Analysis of Macro Problems



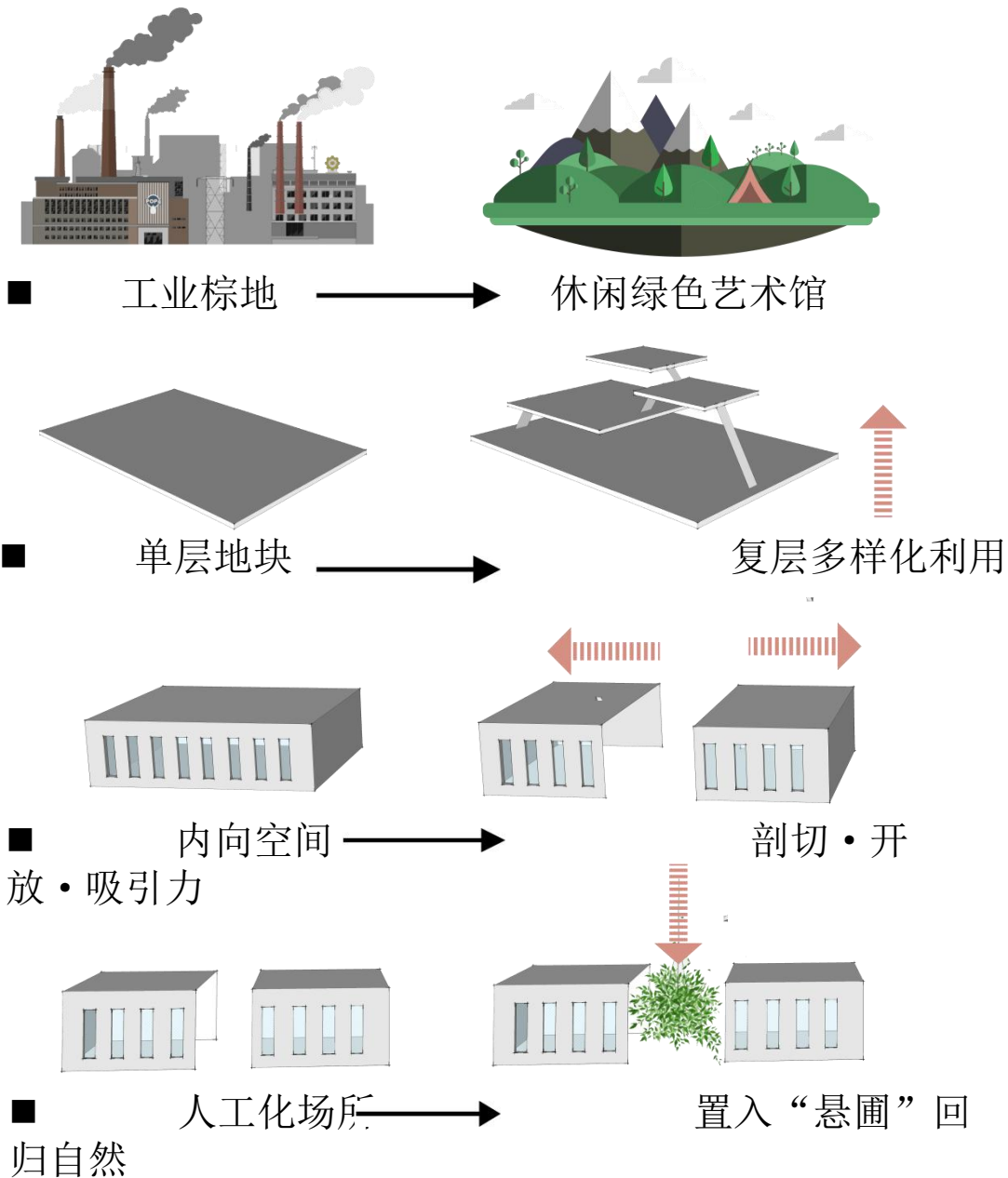
分析问题：微观

场地现状



Analysis of Micro Problems

匣中悬圃



设计说明



■理解幸福：身处雾霾严重的北京，人们工作节奏快速，交流全靠虚拟，人们已无法与自然亲密接触。幸福就是回归自然，与自然亲密接触并交流，体验慢节奏的生活……

■理解艺术馆：艺术馆不应只是静默的艺术展览，更应该让人们通过艺术邂逅、交流，无论是在空间中、自然中、言语中、行为中还是视线中……因为艺术是连接人们心灵的纽带……

■一座让人感觉幸福的艺术馆，应该是一座有明媚的阳光、新鲜的空气、让人回归自然、又充满园林文化与艺术的生态艺术展馆。

Design Specification

■The understanding of happiness: Because of living in the haze of Beijing, going on fast working rhythm, and communicating only through virtual internet, people are unable to contact with nature closely. Happiness comes from returning to nature, connecting with nature, and experiencing the slow pace of life.

■The understanding of art museum: An art museum should not just be a silent art exhibition function, but should create more communication for the strangers, through the space organization people can watch sceneries and achieve the exchange of speech and sight at the same time, because art can break the gap between people.

■ An art museum aims at making people feel happy, should be an ecological art gallery full of garden culture and art, and contains bright sunshine, fresh air which can return people to the natural ecological pavilion.

设计策略

Garden

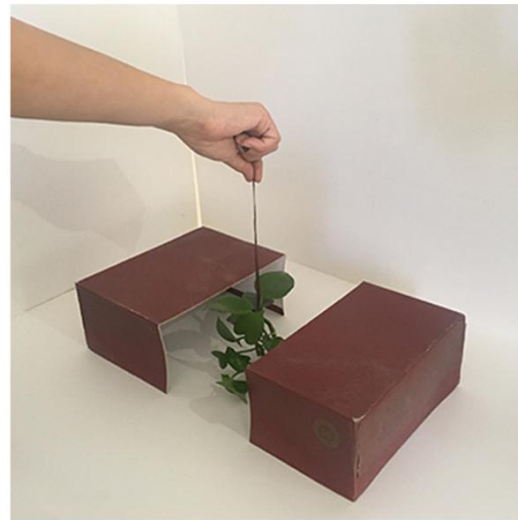
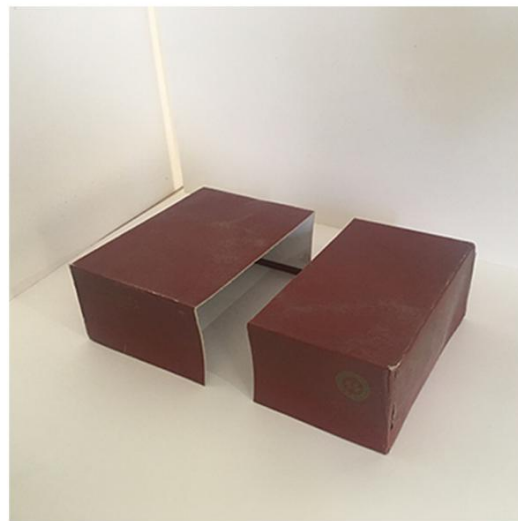
悬圃



■ “悬圃”是中国传统园林的起源，是昆仑山上的仙境，是古人理想的人居环境。本方案就是北京“沙漠”城市中的悬圃，绿色展示空间就是旧厂房建筑中的悬圃。

■“Hanging Fairyland Garden”, the origin of traditional Chinese gardens, is a description of the fairyland on the Kunlun Mountains where is ideal living environment of the ancients. The program is a “Hanging Garden” in the “desert” Beijing megacity, and the hanging green display spaces is a “Hanging Garden” in the old factory box building too.

Design Strategy: Hanging Fairyland



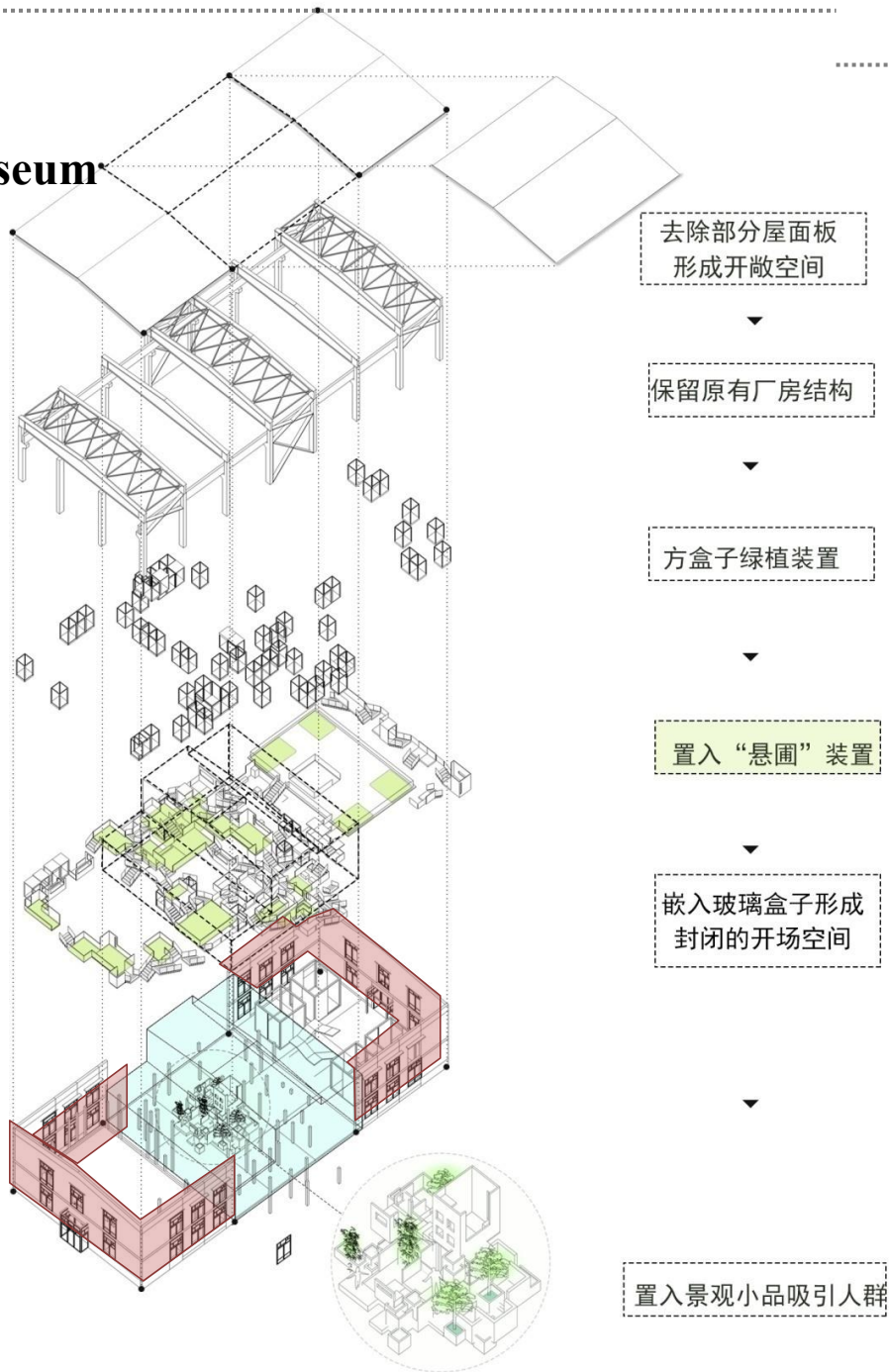
匣里乾坤大
圃中日月长

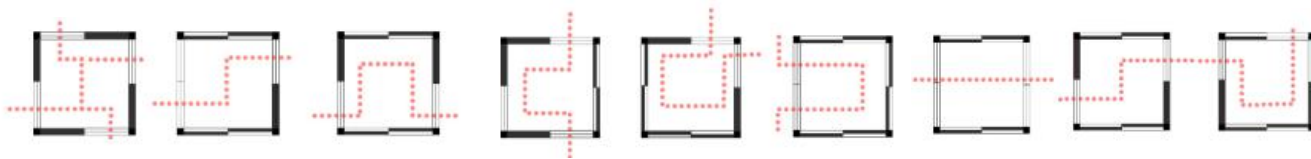
悬圃展馆

Hanging Fairyland Garden Art Museum

■幸福艺术馆：引入植物、阳光、空气、水，用无限变换的游园空间与路径连接与引导，让艺术馆的展览空间在空中悬浮，每一个小空间都是一座园林一个展台，人在其中行走、攀登、眺望、休憩之余吟唱交流，体会慢节奏的绿色幸福生活……

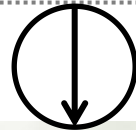
■Happiness Art Museum: Put in plants, sunlight, air, water……and connect infinite transformation space and road together, and let the art exhibition space suspend in the air. Each small space is a landscape of a booth, in which people can walk, climb, overlook and have a rest with chanting and singing to each other, so everyone can experience the slow pace of the green and happy life……





展览模块
组合形式

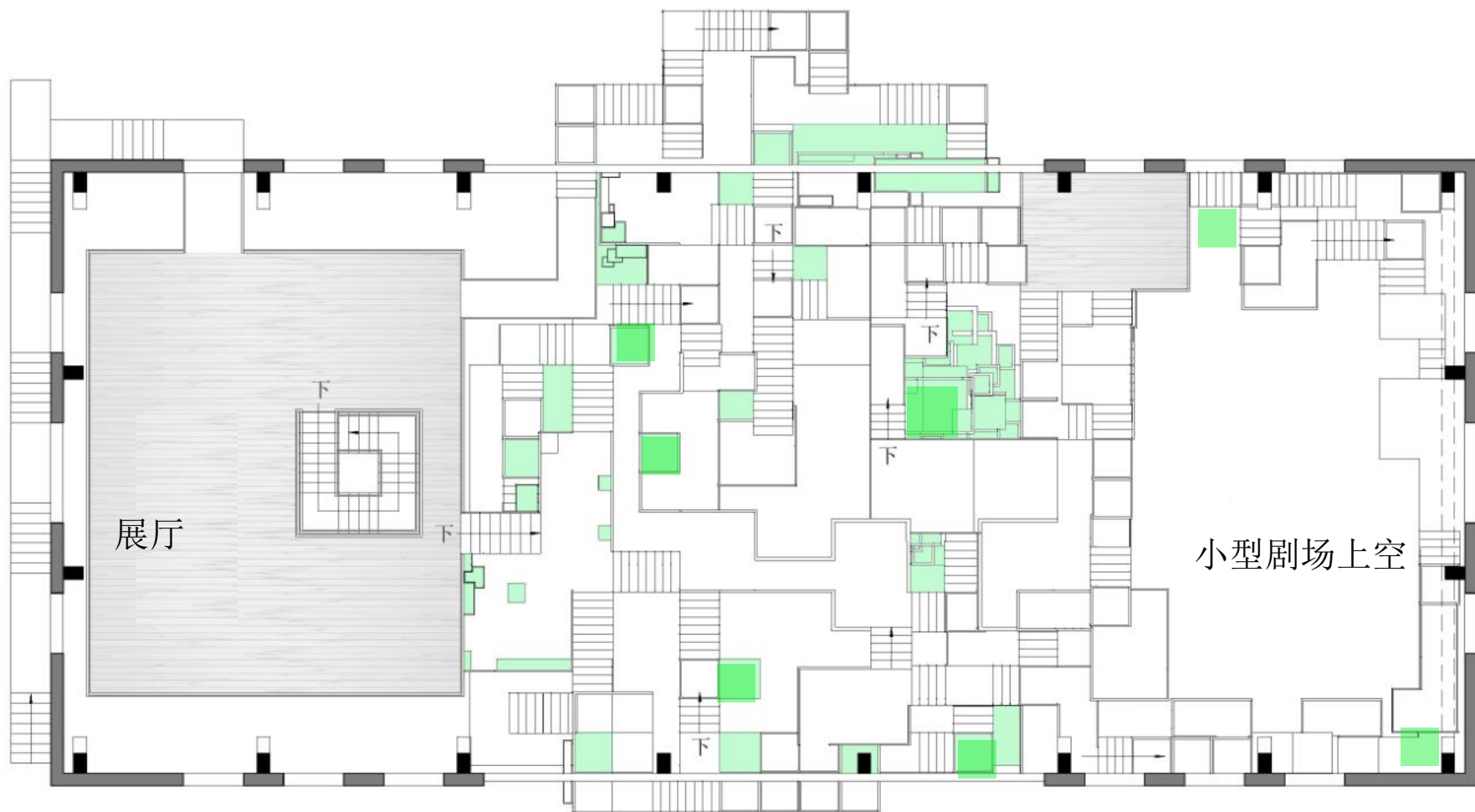
匣中悬圃



一层平面图 1:200

First floor



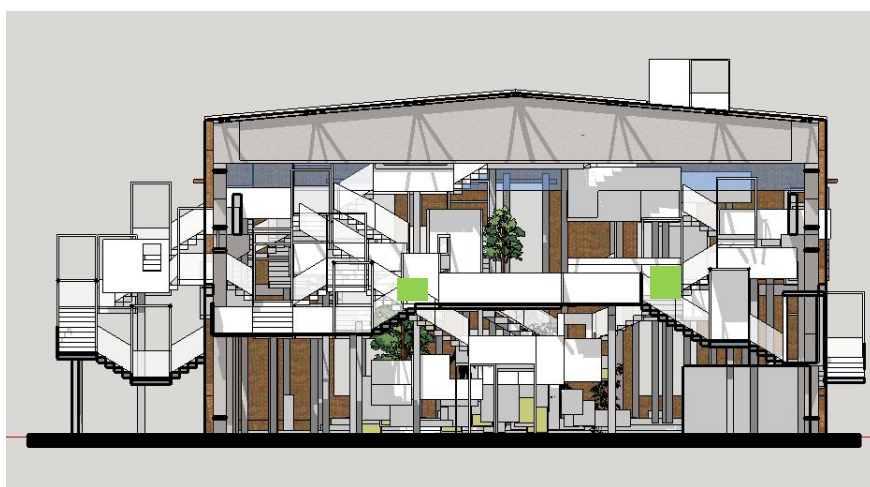


二层平面图1:200

Second floor



2-2剖面 1:200 Section



3-3剖面 1:200 Section

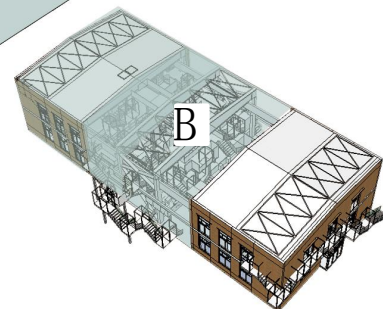


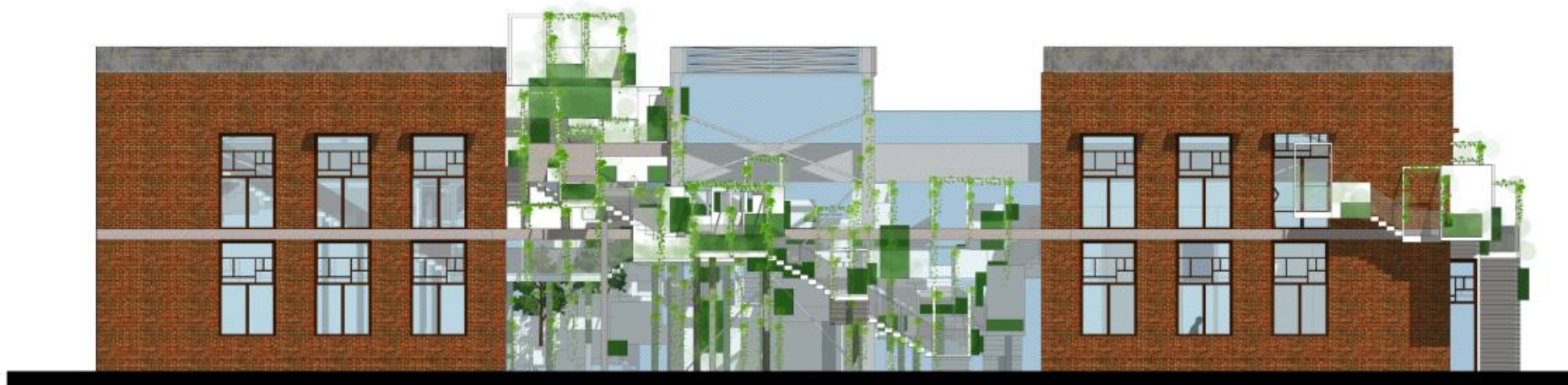
1-1剖面 1:200 Section

局部轴侧图 Partial Axis Mapping



B区轴侧图





南立面图 1:200 South Elevation



东立面图 1:200 East Elevation



4-4剖面图 1:200 Section

认识回归自然 Returns to Nature



药用植物



观赏植物

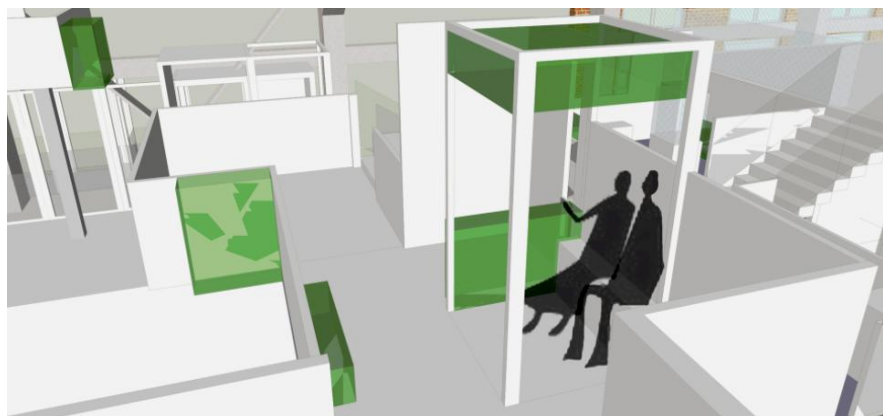
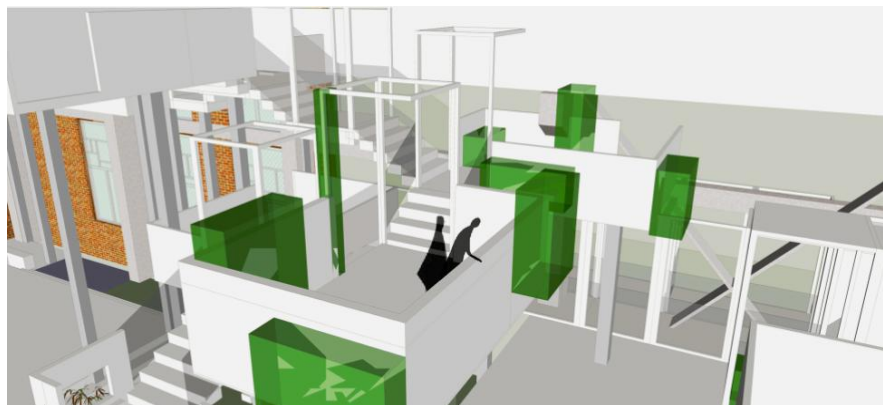


食用植物



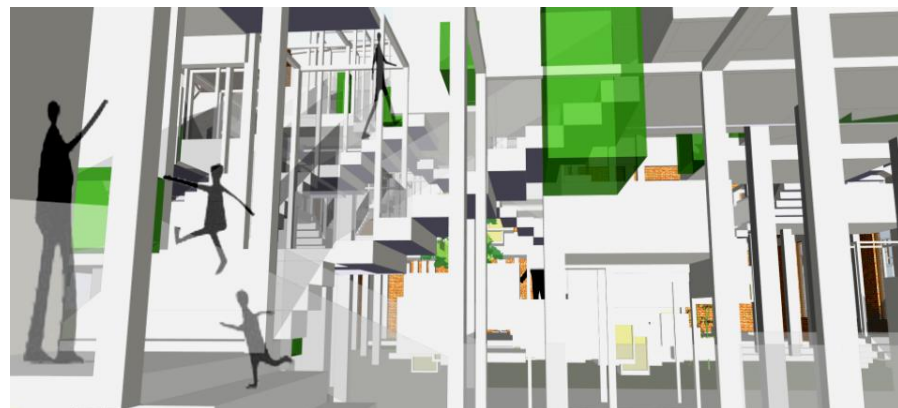
- 把自然装满匣子，草药植物、观赏植物、食用植物，这里无处不春天，无刻不生活.....

寻找清新空气 Search for fresh air



- 在悬圃里创造一处立体绿色过滤空间，既是仙境所在，又可啜吸朝露夕雨.....

做慢慢的蜗牛：体验慢生活节奏 Slow snail: slow life



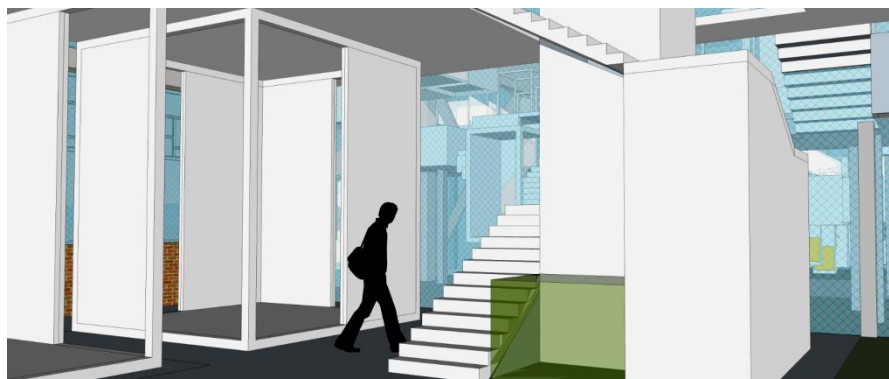
- 把生活放进匣子，享受壶中天地，芥子须弥，慢慢游走，慢慢休憩.....

绿色艺术交流 Green art exchange



- 把朋友带入悬圃，在上下游走，追随中艺术海，翩跹于草木群.....

艺术展示空间 Art exhibition space

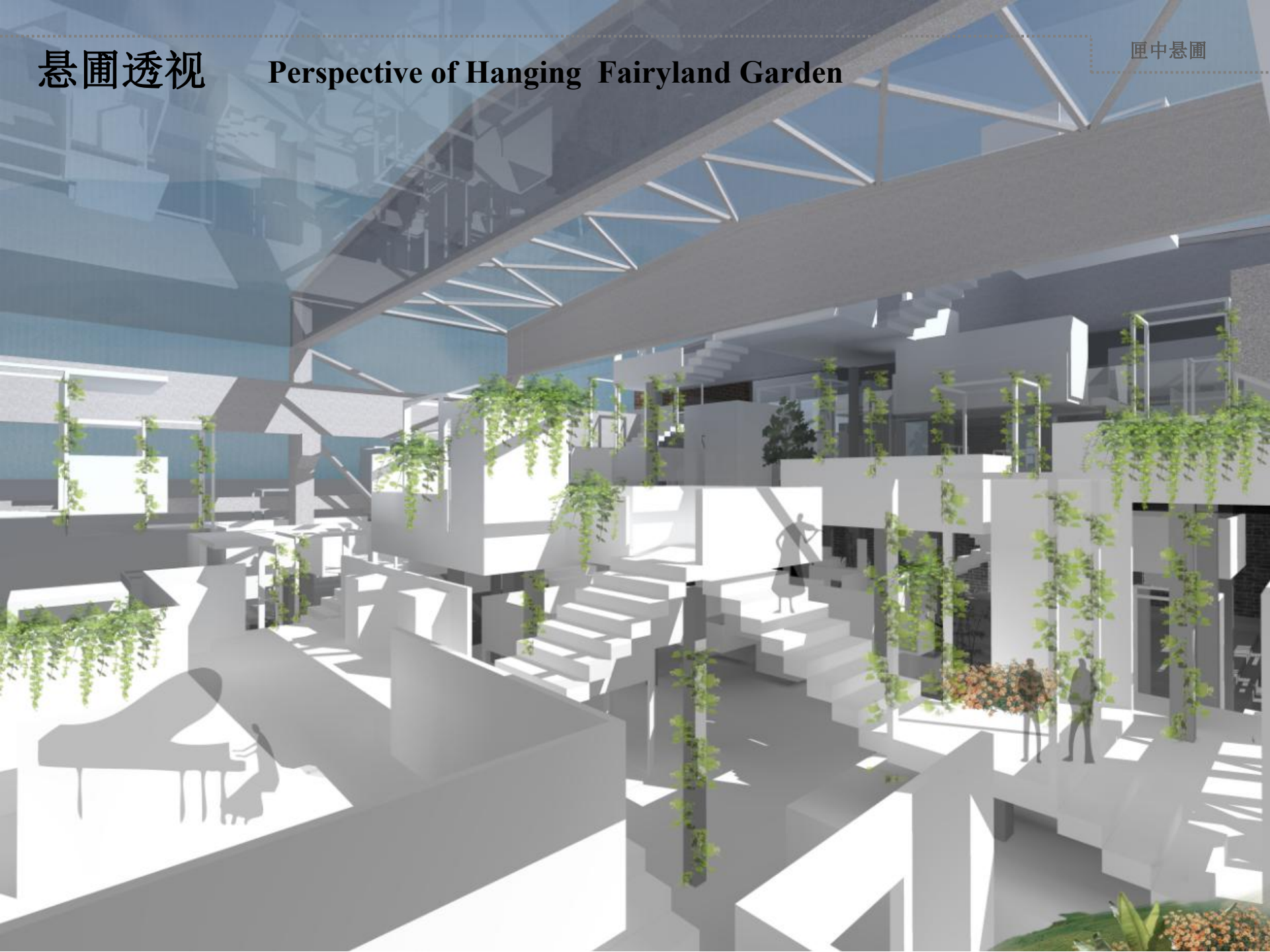


- 入口处用作展览，为人们提供艺术交流空间，四个展示盒子上的展板灵活布置方便展出

悬圃透视

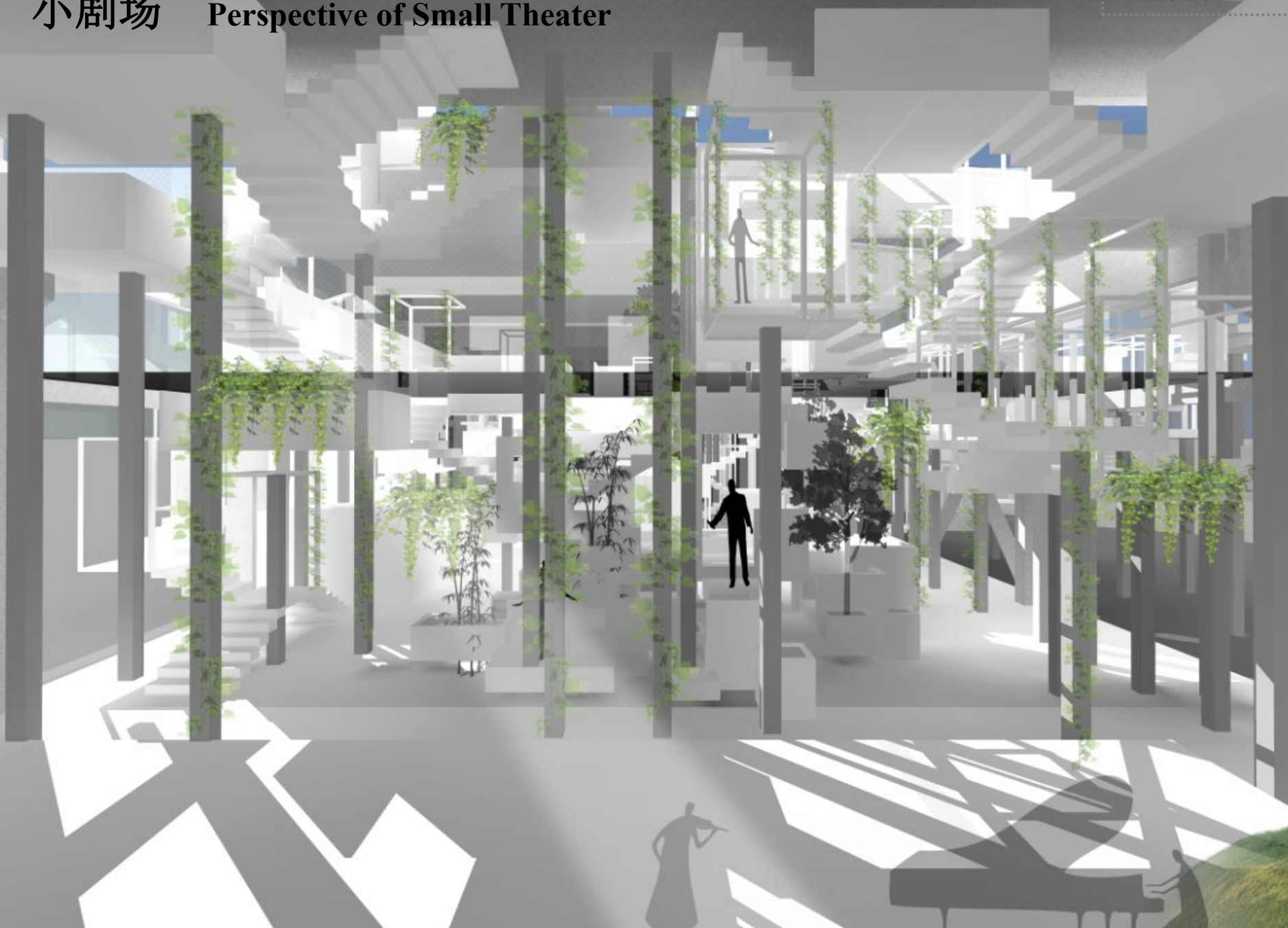
Perspective of Hanging Fairyland Garden

匣中悬圃



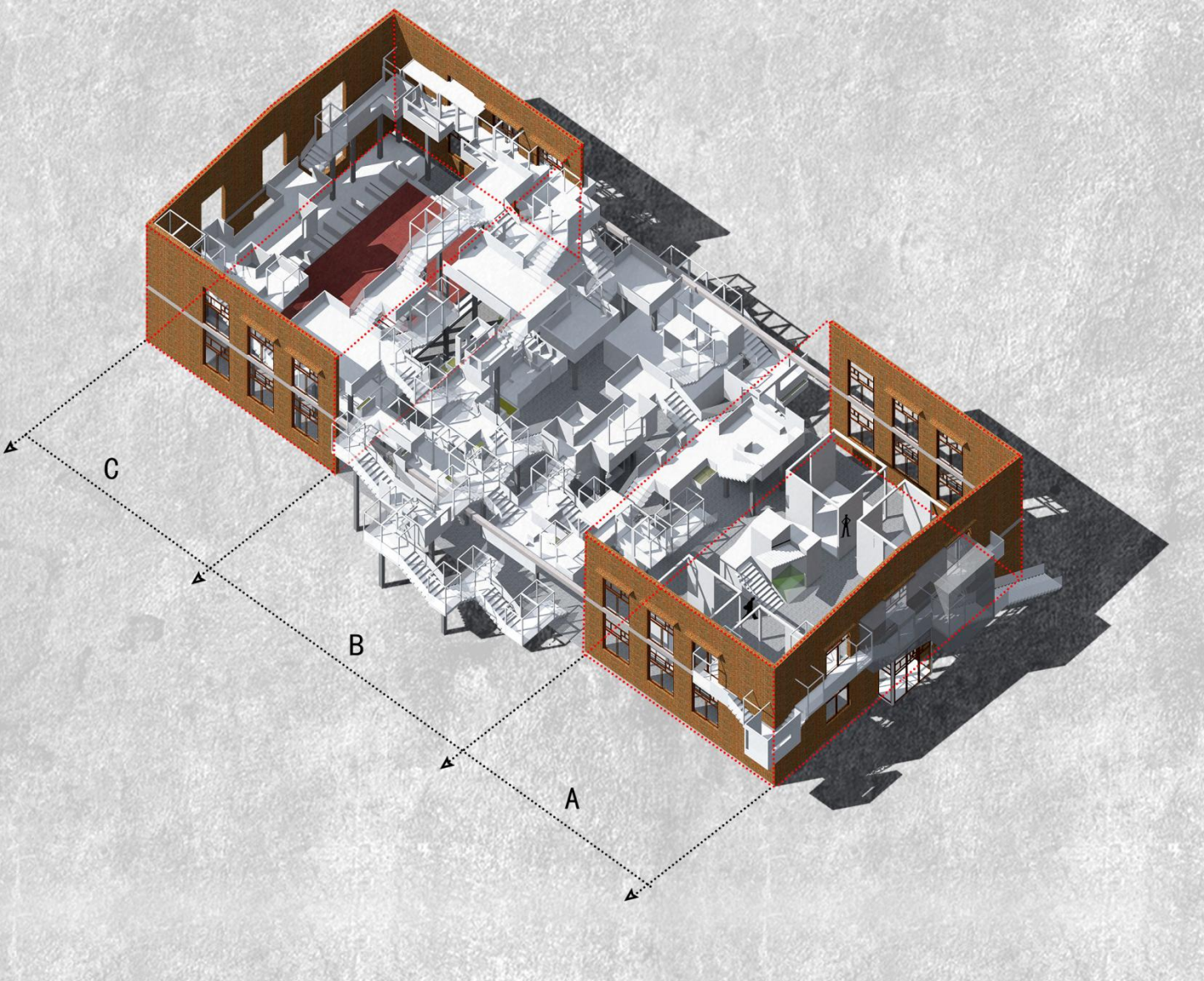
小剧场

Perspective of Small Theater



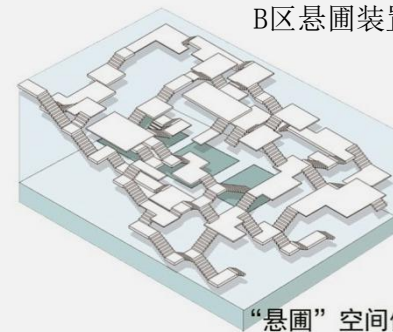
剖轴侧

Axial profile

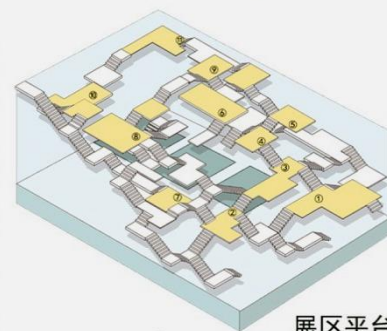


匣中悬圃

B区悬圃装置



“悬圃”空间体系



展区平台



置入绿植



投入运营

鸟瞰 Bird view



匣中懸圃

圃中日月
裏乾坤
大

夜景 Nightscape

